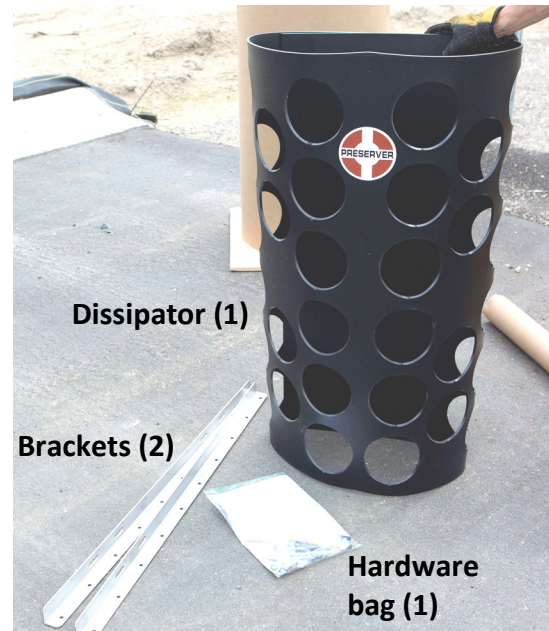




The Preserver™

Dissipator Installation Instructions

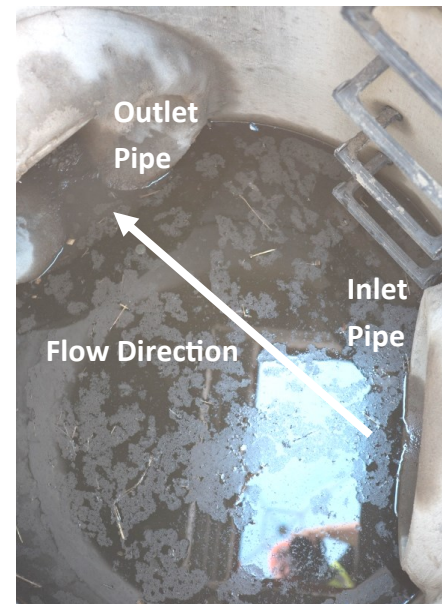
1) Confirm contents.



2) Gather required tools.



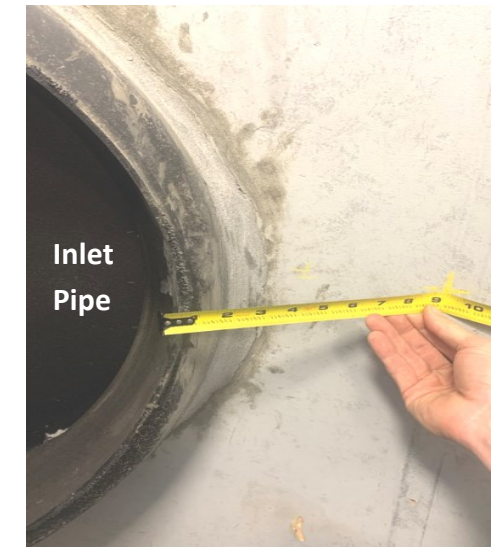
3) Locate inlet pipe.



4) Inspect bracket locations - 9" ± from inside of pipe - and remove/avoid any obstructions.



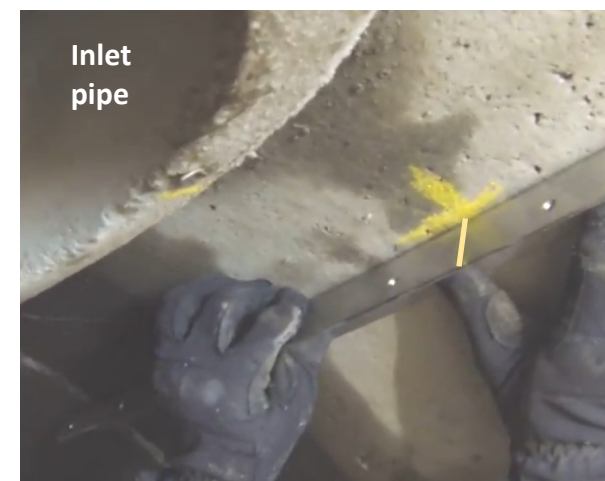
5) Make a vertical mark 9" ± from inside of pipe. Repeat on other side of pipe at an equal distance.



6) Make a horizontal mark from center of pipe, crossing bracket marks from previous step.



7) Mark the center of the bracket on the back (pipe side) edge.



8) Align wall bracket with marks made in Steps 5, 6 and 7. Use level to ensure bracket is vertical prior to next step.



9) Install one anchor bolt per pair of slots. See additional anchor bolt instructions in hardware bag. Repeat Steps 6 through 9 to attach the other wall bracket.

Pat. US 9,752,600 B2
Pat. CA 2,893,173

Questions? Call 877-773-0073

Installer is responsible for meeting all safety and confined space entry requirements.

PROUDLY MADE IN THE USA
QUALITY MATERIALS:
• 100% recycled HDPE
• Stainless steel brackets
• Stainless steel hardware

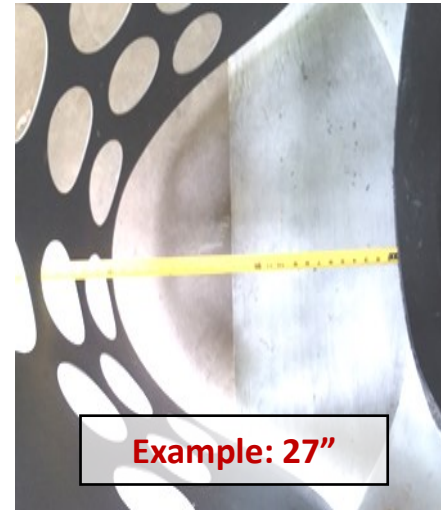


Dissipator Installation Instructions

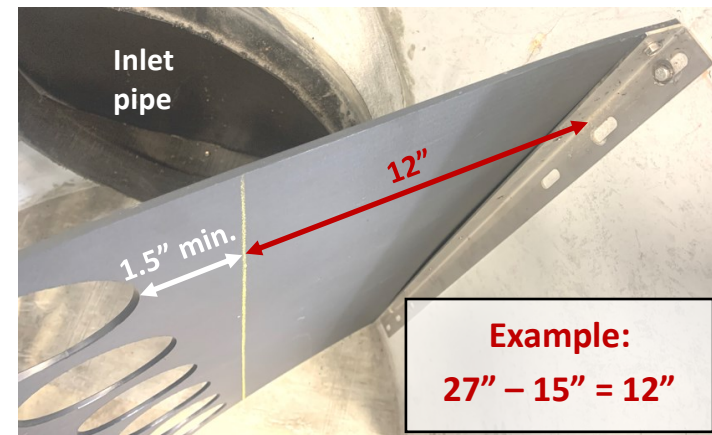
10) Temporarily connect the Dissipator to the pipe side of both brackets using (1) or (2) self-tapping screws at the top and bottom of each bracket.



11) Measure the distance from the end of the pipe invert to the end of the Dissipator,



12) Subtract the greater of 15" or half the pipe diameter from the measurement in Step 11. Mark that distance on the dissipator from the wall and draw a vertical cut line. Cut line must be at least 1.5" from any Dissipator opening — adjust as necessary.



13) If determined necessary in Step 12, make a straight cut along the cut line. Remove scrap from bracket and retain screws.



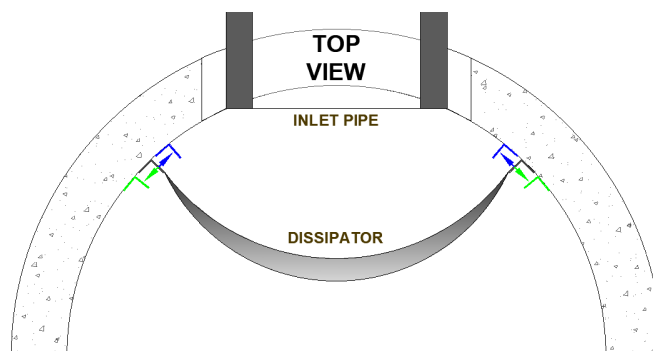
14) Attach dissipator to bracket with screws. Adjust your drill's torque setting to prevent stripping. Repeat Steps 12–14 at other bracket.



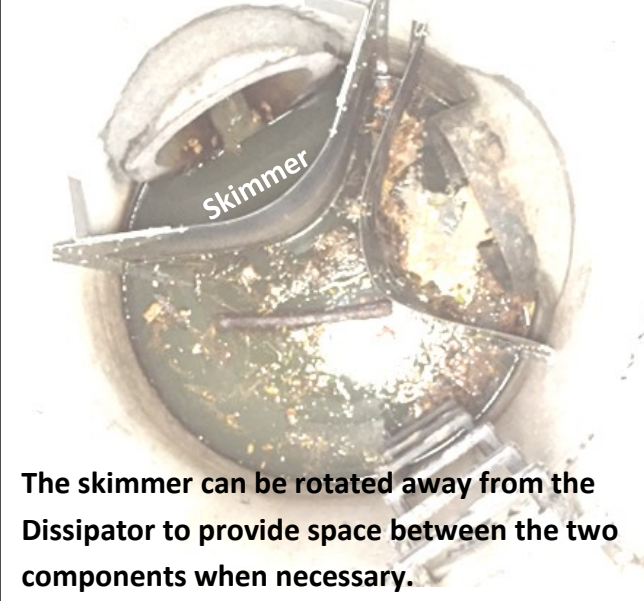
INSTALLATION TIPS

When avoiding obstructions:

The Dissipator brackets can be moved inward or outward (relative to the pipe). However, each bracket should be located an equal distance from the pipe.

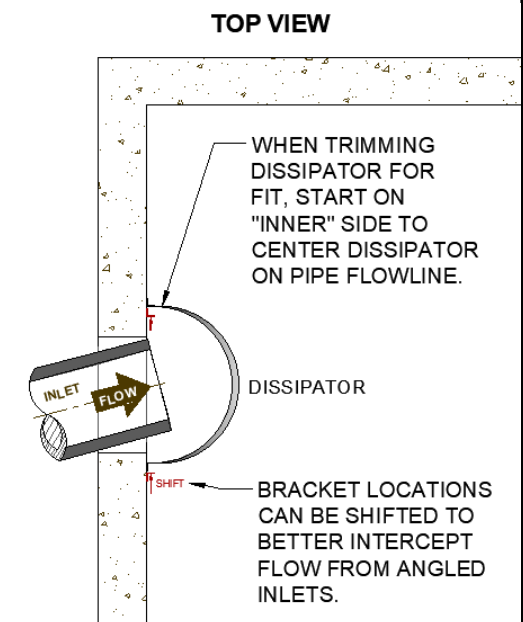


When installing Dissipator(s) with a skimmer:



When installing a Dissipator over an angled inlet:

The installer can take advantage of The Preserver's install flexibility by adjusting the bracket locations and trimming the "inner" side of the Dissipator more than the "outer" side (see notes on figure to the right). Be sure to maintain the minimum required distance between the pipe and Dissipator (greater of 15" or half the pipe diameter).



Pat. US 9,752,600 B2
Pat. CA 2,893,173

Questions? Call 877-773-0073

Installer is responsible for meeting all safety and confined space entry requirements.

PROUDLY MADE IN THE USA
QUALITY MATERIALS:
• 100% recycled HDPE
• Stainless steel brackets
• Stainless steel hardware